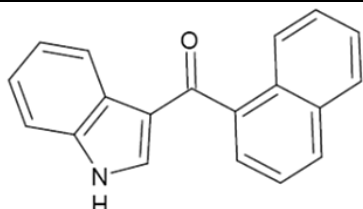


## Anlage III

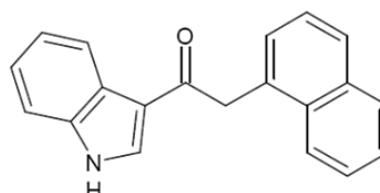
## Strukturformeln – Beispiele zu Anlage II

## Zu Z 1: Cannabinomimetisch wirksame Verbindungen

## Zu Z 1 lit. a: (1H-Indol-3-yl)Methanon-Verbindungen

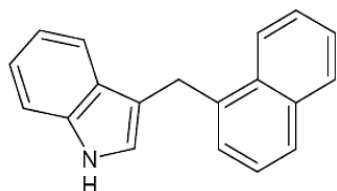


1H-Indol-3-yl(Naphthalen-1-yl)-Methanon



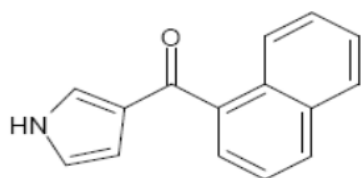
1-(1H-Indol-3-yl)-2-(Naphthalen-1-yl)-Ethanon

## Zu Z 1 lit. b: (1H-Indol-3-yl)Methan-Verbindungen



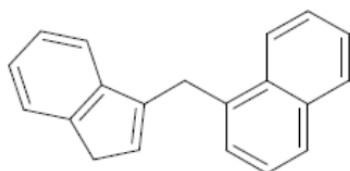
3-(Naphthalen-1-yl-Methyl)-1H-Indol

## Zu Z 1 lit. c: (1H-Pyrrol-3-yl)Methanon-Verbindungen

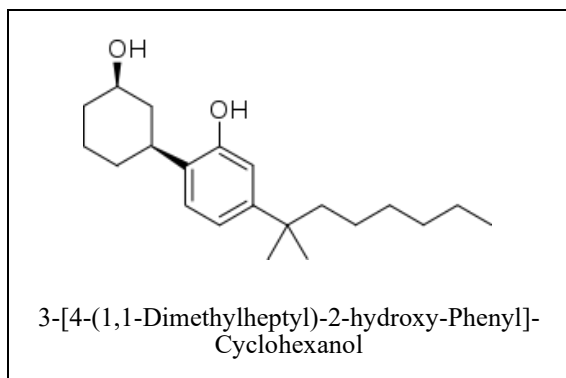
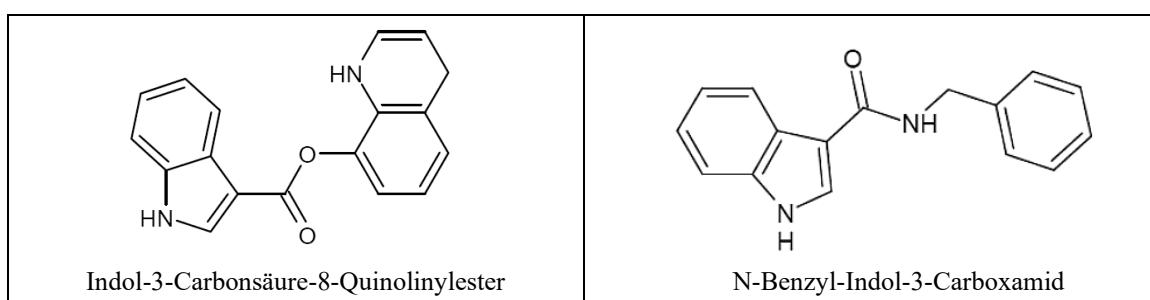
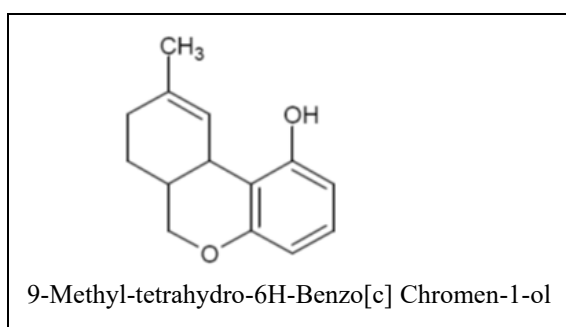
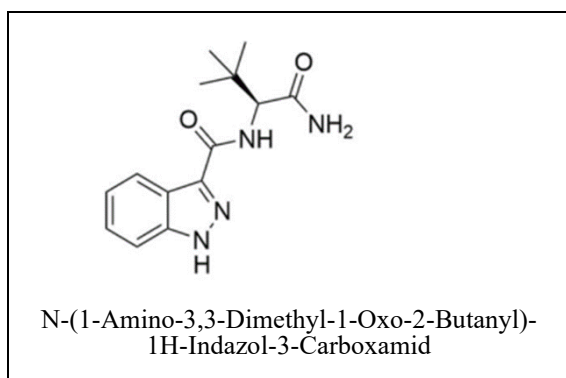


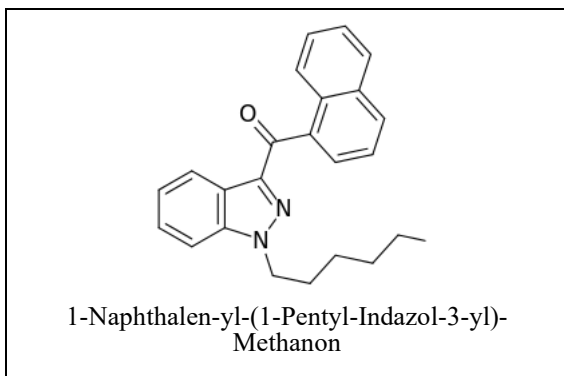
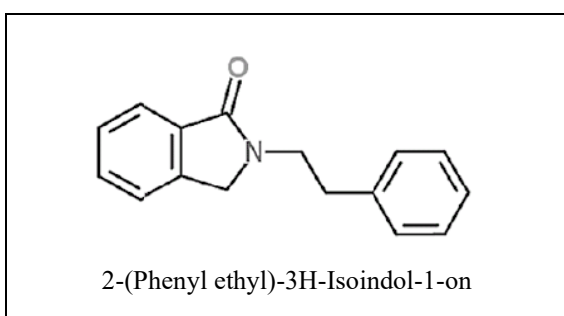
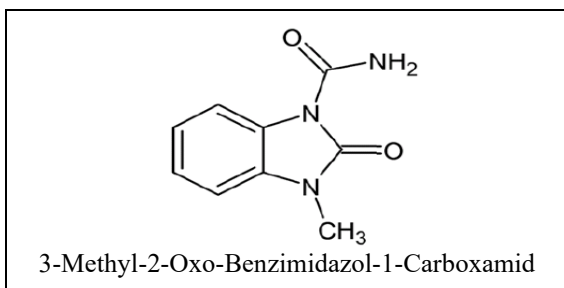
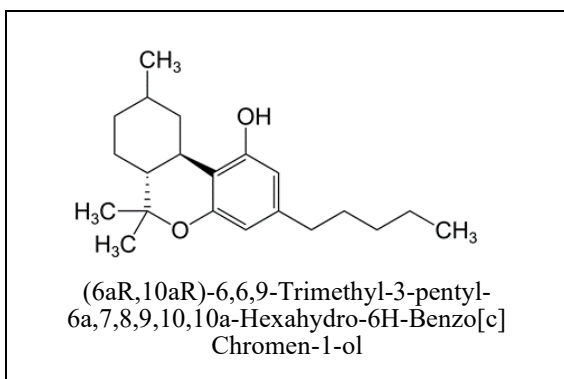
Naphthalen-1-yl(1H-Pyrrol-3-yl)-Methanon

## Zu Z 1 lit. d: (1H-Inden-3-yl)-Methan- und (3-Inden-1-ylidin)Methyl-Verbindungen

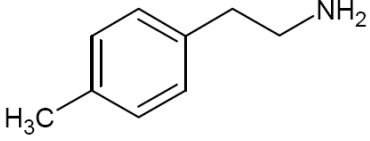
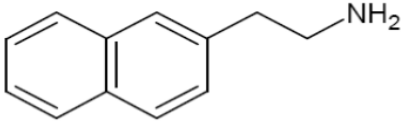
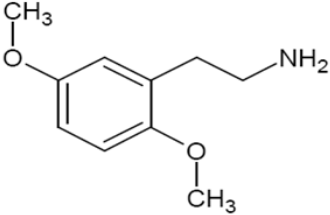
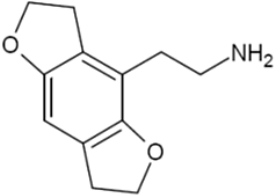
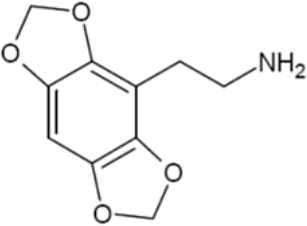
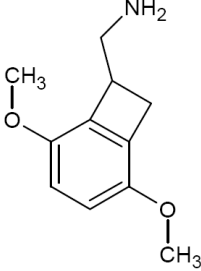
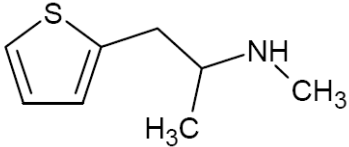


1-(1H-Inden-3-yl-Methyl)-Naphthalen

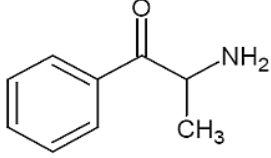
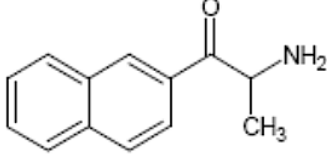
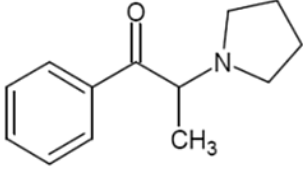
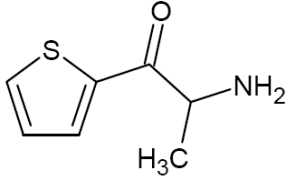
**Zu Z 1 lit. e: 2-(3-Hydroxycyclohexyl)Phenol-Verbindungen****Zu Z 1 lit. f: Indol-3-Carbonsäurederivate****Zu Z 1 lit. g: Tetrahydro-6H-Benzo[c] Chromen-1-ol -Verbindungen****Zu Z 1 lit. h: 1H Indazol-3-Carboxamid-Verbindungen**

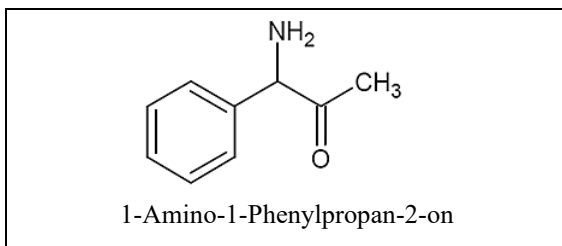
**Zu Z 1 lit. i: (1H-Indazol-3-yl)Methanon-Verbindungen****Zu Z 1 lit. j: Phenyl-Ethyl Isoindol-on -Verbindungen****Zu Z 1 lit. k: 2-Oxo-Benzimidazol-N-Carboxamid -Verbindungen****Zu Z 1 lit. l: Hexahydro-6H-Benzo[c] Chromen-1-ol -Verbindungen**

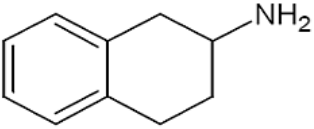
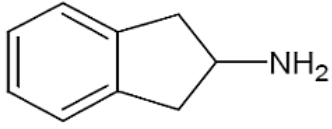
**Zu Z 2: Phenethylamin-Verbindungen**

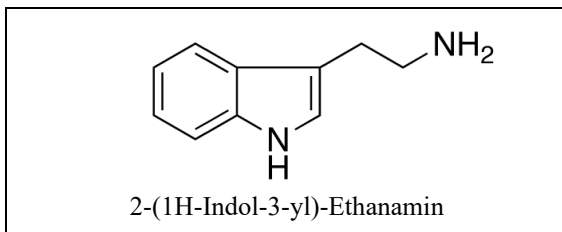
 <p>2-(4-Methylphenyl)Ethanamin</p>	 <p>2-(Naphthalen-2-yl)-Ethanamin</p>
 <p>2-(2,5-Dimethoxyphenyl)-Ethanamin</p>	 <p>2-(2,3,6,7-tetrahydrofuro [2,3-f][1]Benzofuran-4-yl)-Ethanamin</p>
 <p>2-([1,3]Dioxolo[4,5-f][1,3]Benzodioxol-4-yl)-Ethanamin</p>	 <p>1-(2,5-Dimethoxybicyclo [4.2.0] octa-1,3,5-trien-7-yl) Methanamin</p>
 <p>1-(Thiophen-2-yl)-2-Methyl-(N-Methyl) Ethanamin</p>	

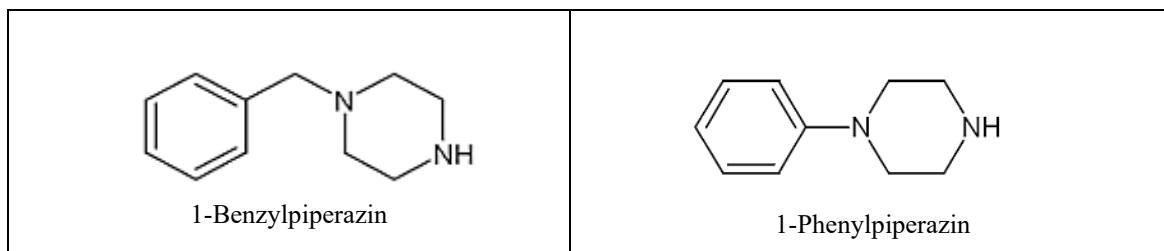
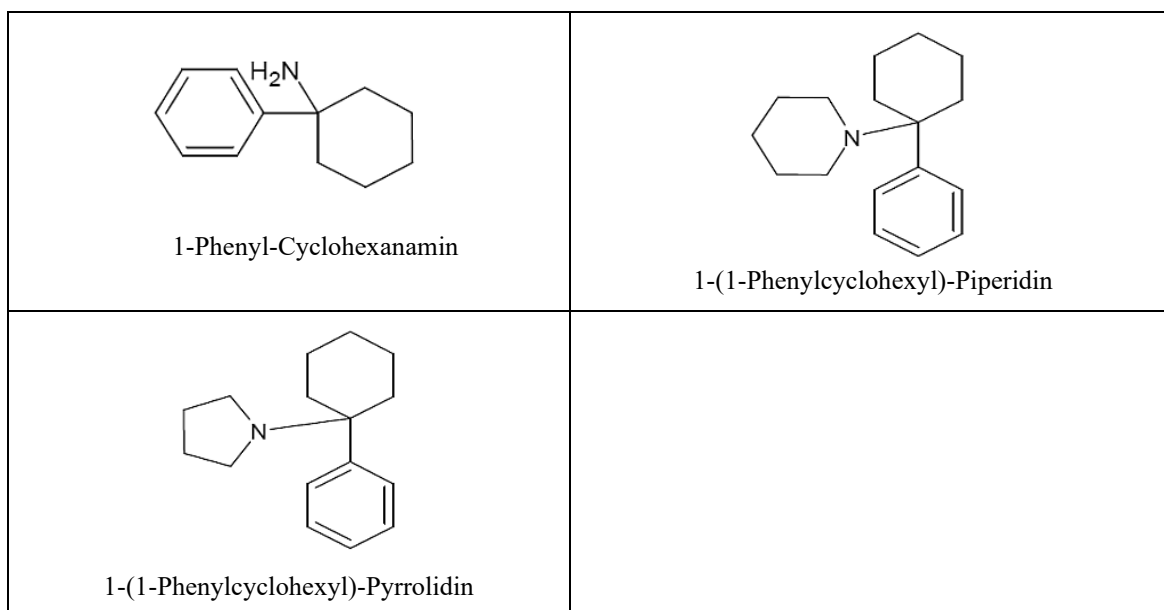
**Zu Z 3: Amino-Phenyl-Ethanon-Verbindungen**

 <p>2-Amino-1-Phenylpropan-1-on</p>	 <p>2-Amino-1-(Naphthalen-2-yl)-Propan-1-on</p>
 <p>1-Phenyl-2-(Pyrrolidin-1-yl)-Propan-1-on</p>	 <p>1-(Thiophen-2-yl) 2-Methylaminopropan-1-on</p>

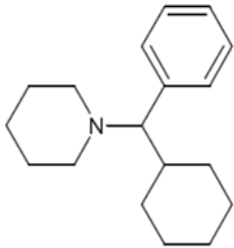
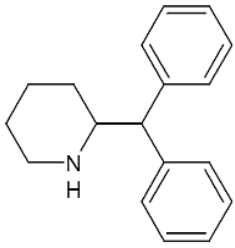
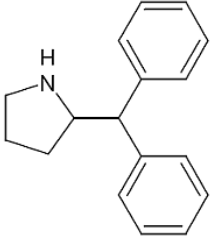
**Zu Z 4: Alpha-Keto-Benzylamin-Verbindungen****Zu Z 5: 2-Aminoindan- und 2-Aminotetralin-Verbindungen**

 <p>1,2,3,4-Tetrahydronaphthalin-2-Amin</p>	 <p>2,3-Dihydro-Inden-2-Amin</p>
--	--

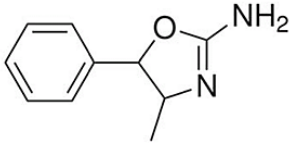
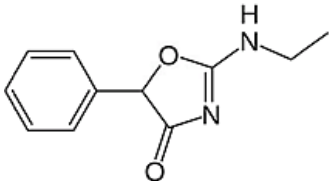
**Zu Z 6: Tryptamin-Verbindungen**

**Zu Z 7: (1-Phenyl- und 1-Benzyl) Piperazin-Verbindungen****Zu Z 8: Arylcyclohexyl-Amin, -Pyrrolidin und -Piperidin-Verbindungen**

**Zu Z 9: Benzyl-Piperidin- und Benzyl-Pyrrolidin-Verbindungen**

 <p>1-[Cyclohexyl(Phenyl)methyl]-Piperidin</p>	 <p>2-(Diphenylmethyl)-Piperidin</p>
 <p>2-(Diphenylmethyl)-Pyrrolidin</p>	

**Zu Z 10: 2-Amino-Phenyl-Oxazol- und 2-Amino-Phenyl-Oxazol-Verbindungen**

 <p>4-Methyl-5-Phenyl-2-Amino-Oxazolin</p>	 <p>2-Ethylamino-5-Phenyl-1,3-Oxazol-4-on</p>
---	---