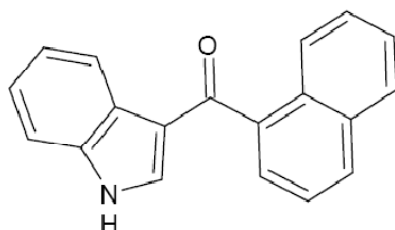


## Anlage III

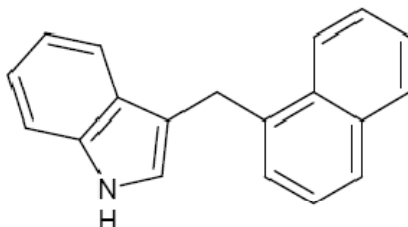
## Strukturformeln – Beispiele zu Anlage II

## Zu Z 1: Cannbinomimetisch wirksame Verbindungen

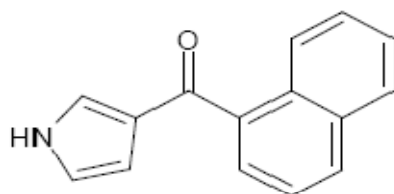
Naphthoyl-Indole:

1*H*-Indol-3-yl(Naphthalen-1-yl)-Methanon

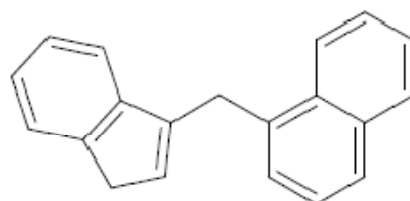
Naphthylmethyl-Indole:

3-(Naphthalen-1-yl-Methyl)-1*H*-Indol

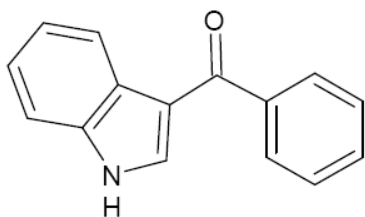
Naphthoyl-Pyrrole:

Naphthalen-1-yl(1*H*-Pyrrol-3-yl)-Methanon

Naphthylmethyl-Indene:

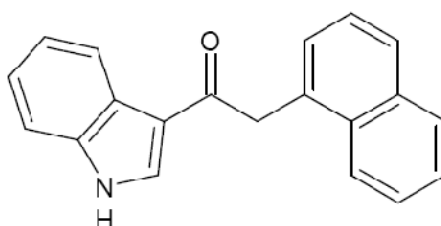
1-(1*H*-Inden-3-yl-Methyl)-Naphthalen

Benzoyl-Indole:



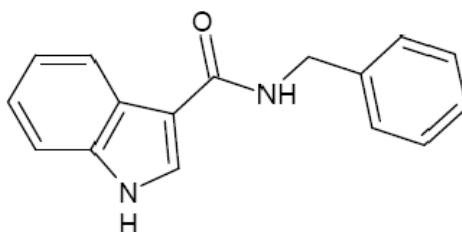
1*H*-Indol-3-yl(Phenyl)-Methanon

Phenacetyl-Indole:



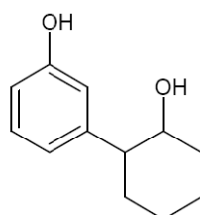
1-(1*H*-Indol-3-yl)-2-(Naphthalen-1-yl)-Ethanon

Indolcarbon-2-Säureamide:



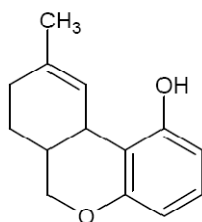
*N*-Benzyl-1*H*-Indole-3-Carboxamid

Cyclohexyl-Phenole:



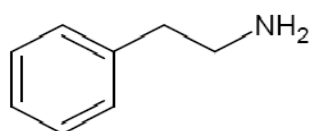
3-(2-Hydroxycyclohexyl)-Phenol

Dibenzopyrane:

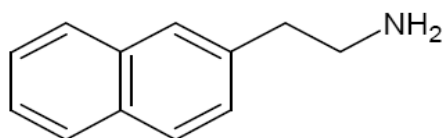


9-Methyl-tetrahydro-6H-Benzo[c]chromen-1-ol

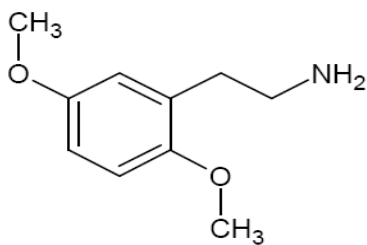
### Zu Z 2: Phenethylamin-Verbindungen



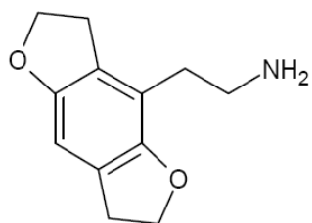
2-Phenylethanamin



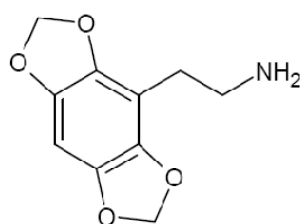
2-(Naphthalen-2-yl)-Ethanamin



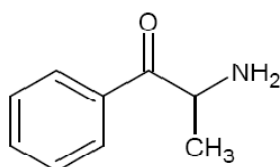
2-(2,5-Dimethoxyphenyl)-Ethanamin



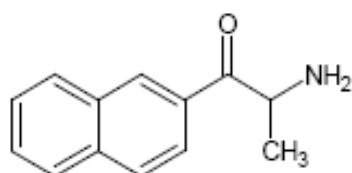
2-(2,3,6,7-tetrahydrofuro[2,3-f][1]Benzofuran-4-yl)-Ethanamin



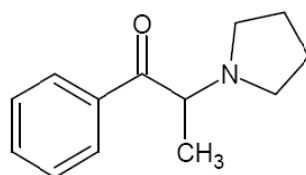
2-([1,3]Dioxolo[4,5-f][1,3]Benzodioxol-4-yl)-Ethanamin

**Zu Z 3: Amino-Phenyl-Ethanon-Verbindungen**

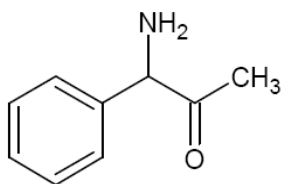
2-Amino-1-Phenylpropan-1-on



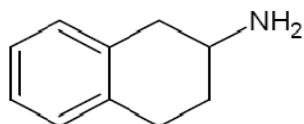
2-Amino-1-(Naphthalen-2-yl)Propan-1-on



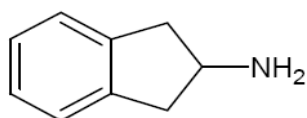
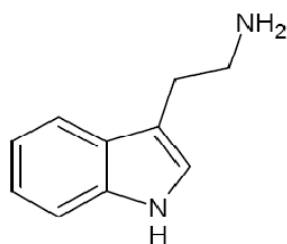
1-Phenyl-2-(Pyrrolidin-1-yl)-Propan-1-on

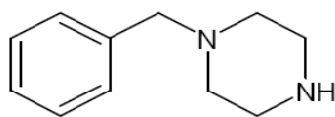
**Zu Z 4: Alpha-Keto-Benzylamin-Verbindungen**

1-Amino-1-Phenylpropan-2-on

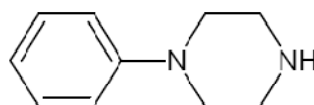
**Zu Z 5: 2-Aminoindan- und 2-Aminotetralin-Verbindungen**

1,2,3,4-tetrahydronaphthalen-2-Amin

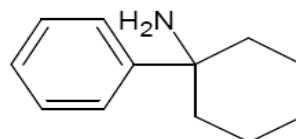
2,3-dihydro-1*H*-Inden-2-Amin**Zu Z 6: Tryptamin-Verbindungen**2-(1*H*-Indol-3-yl)-Ethanamin

**Zu Z 7: (1-Phenyl und 1-Benzyl) Piperazin-Verbindungen**

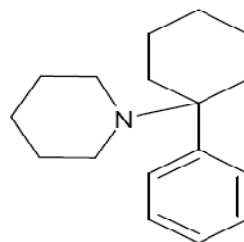
1-Benzylpiperazin



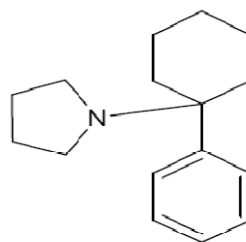
1-Phenylpiperazin

**Zu Z 8: Arylcyclohexylamin-Verbindungen**

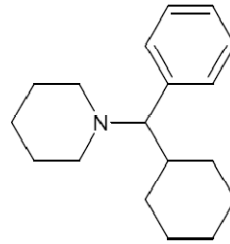
1-Phenylcyclohexanamin



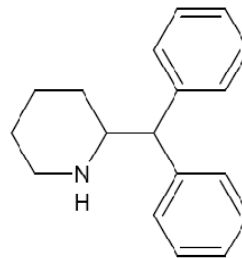
1-(1-Phenylcyclohexyl)-Piperidin



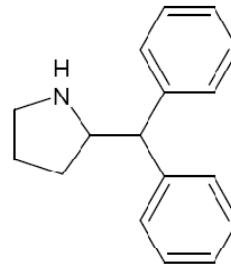
1-(1-Phenylcyclohexyl)-Pyrrolidin

**Zu Z 9: Diphenylmethylpiperidin-Verbindungen**

1-[Cyclohexyl(Phenyl)methyl]-Piperidin



2-(Diphenylmethyl)-Piperidin



2-(Diphenylmethyl)Pyrrolidin